



West Hertfordshire Primary Care Trust and  
East and North Hertfordshire Primary Care Trust



# **CHILD HEALTH IN HERTFORDSHIRE**

**DR HILARY ANGWIN  
CONSULTANT IN PUBLIC HEALTH**

**HERTFORDSHIRE PCTs**



West Hertfordshire Primary Care Trust and  
East and North Hertfordshire Primary Care Trust

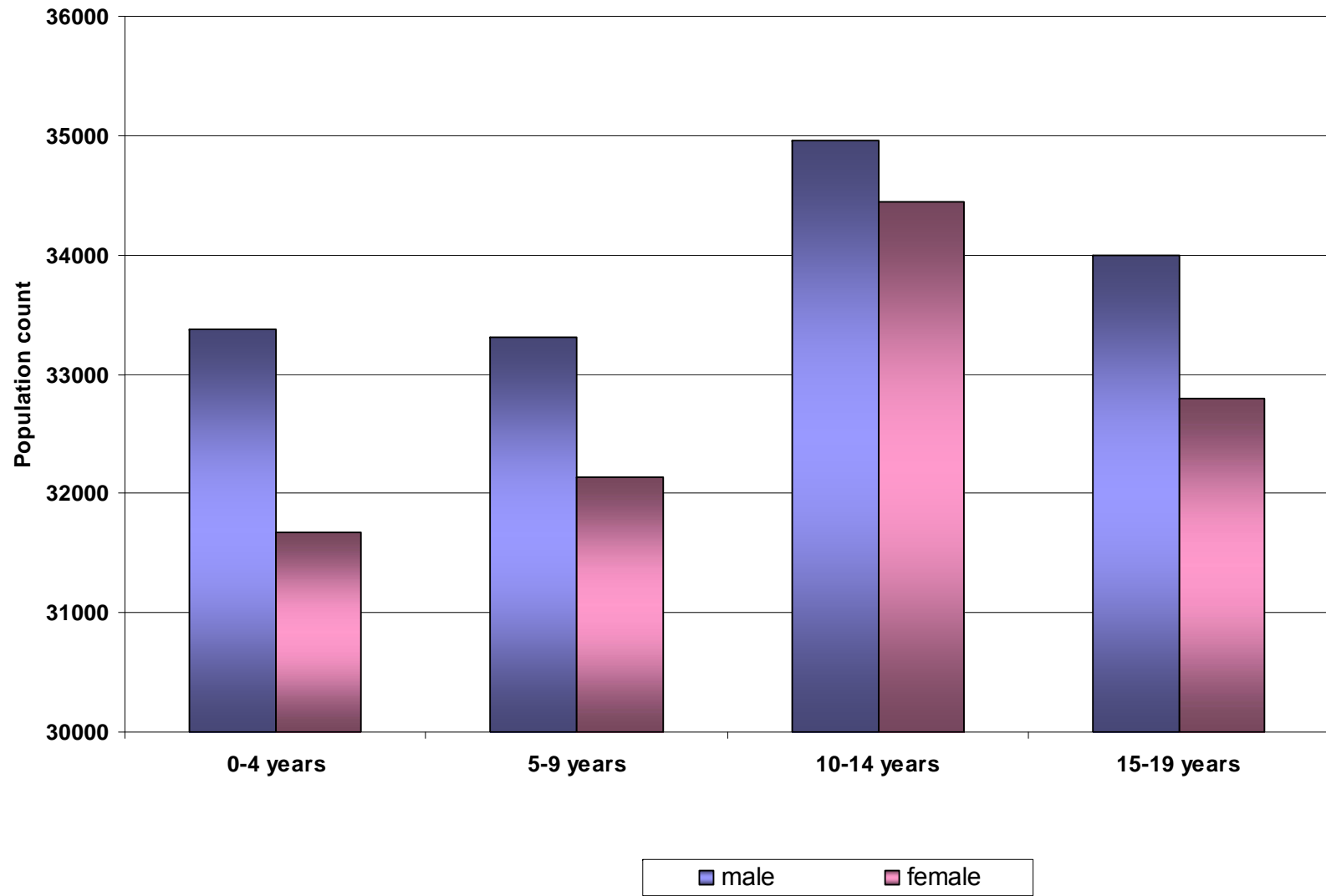


266,678 children in Hertfordshire age 0-19 years  
in 2006.

25% of Hertfordshire population

In the last five years the total number of children  
has increased by 4,957.

**Number of boys and girls aged 0-19 years in Hertfordshire**





West Hertfordshire Primary Care Trust and  
East and North Hertfordshire Primary Care Trust



# Health Inequalities

November 2008

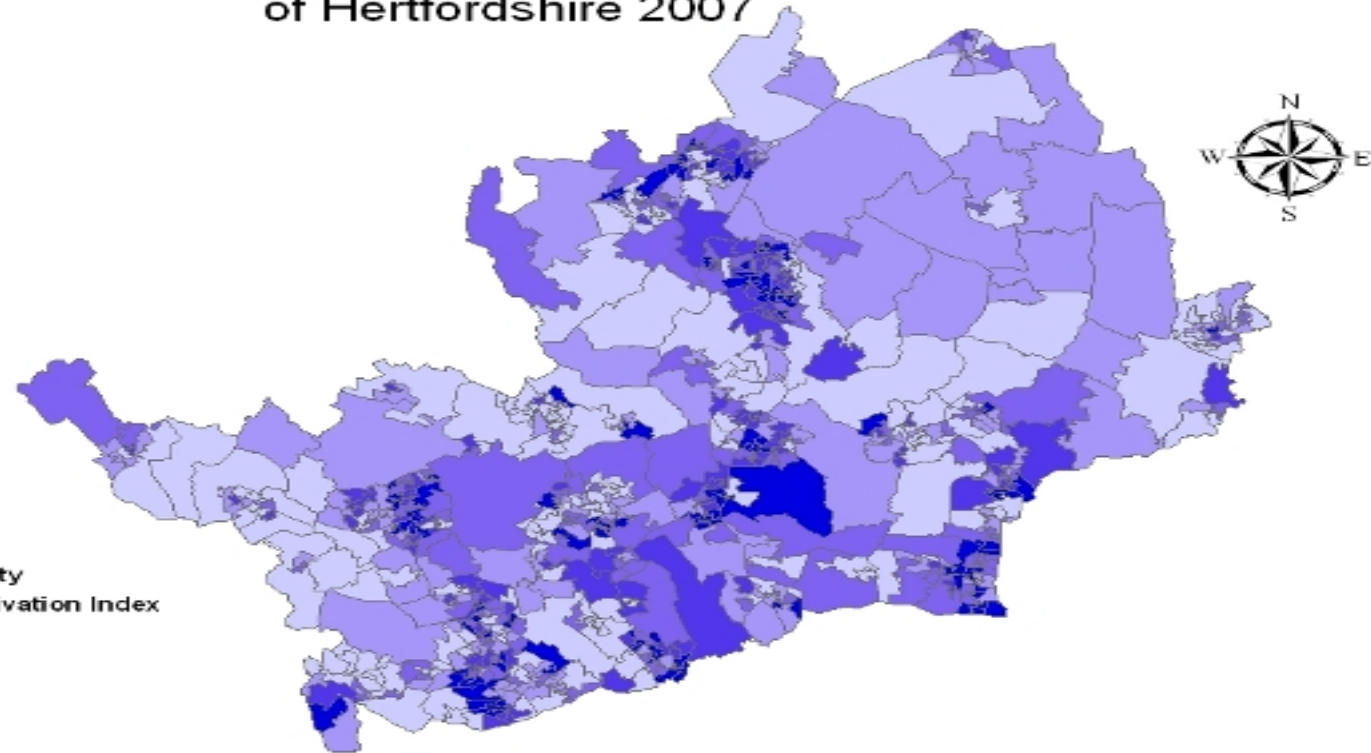
Dr Hilary Angwin



West Hertfordshire Primary Care Trust and  
East and North Hertfordshire Primary Care Trust

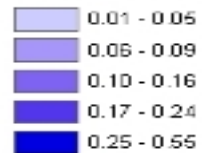


## Income Affecting Children Deprivation Index in Lower Super Output Areas of Hertfordshire 2007



### Legend

LSOAs in Hertfordshire County  
Income Affecting Children Deprivation Index



Crown Copyright 2007  
Licence number 100046630  
Hertfordshire Primary Care Trust

Source: Indices of Multiple Deprivation 2007



November 2008

Dr Hilary Angwin



West Hertfordshire Primary Care Trust and  
East and North Hertfordshire Primary Care Trust

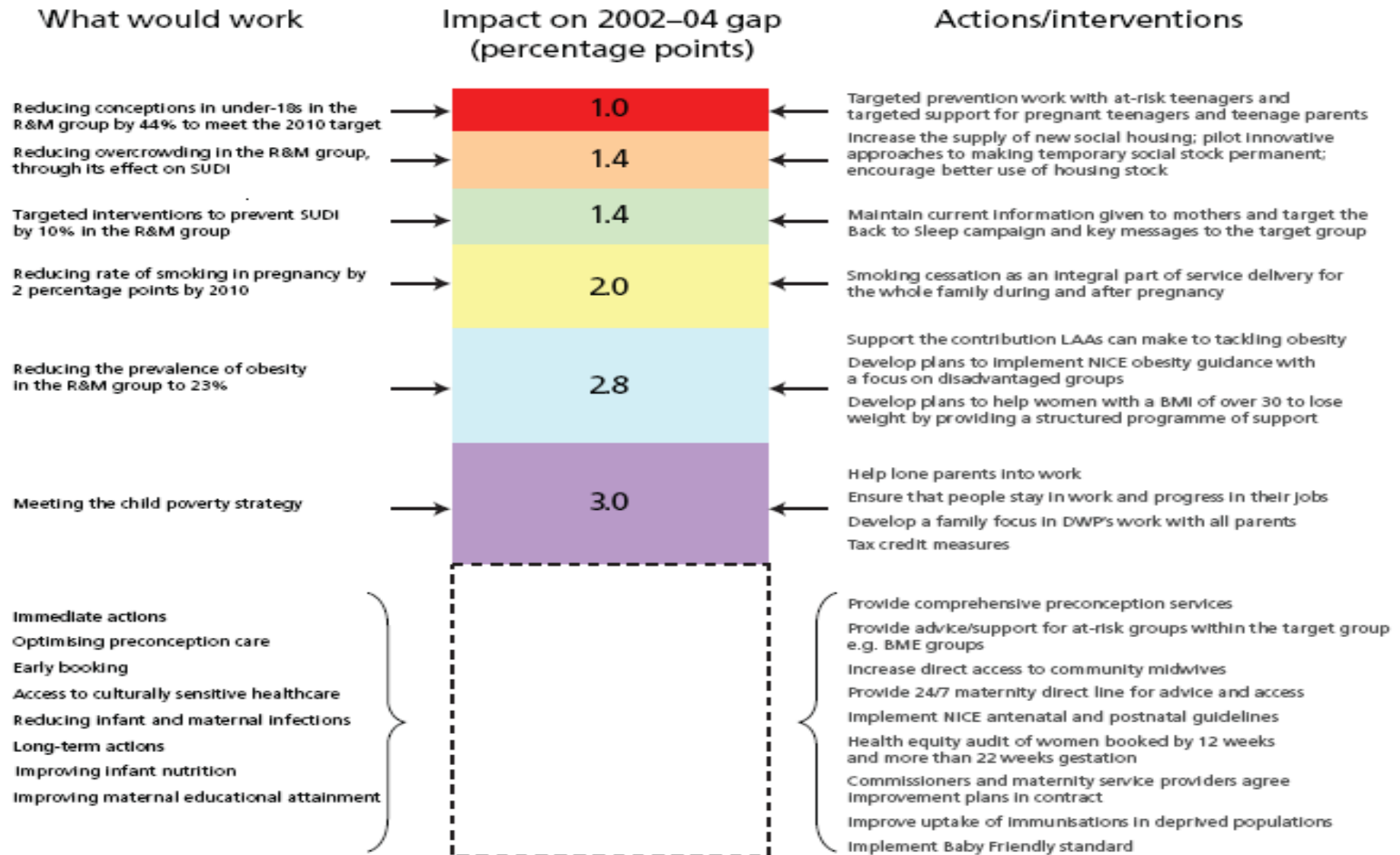


Infant mortality – number of deaths at ages under one year per 1000 births.

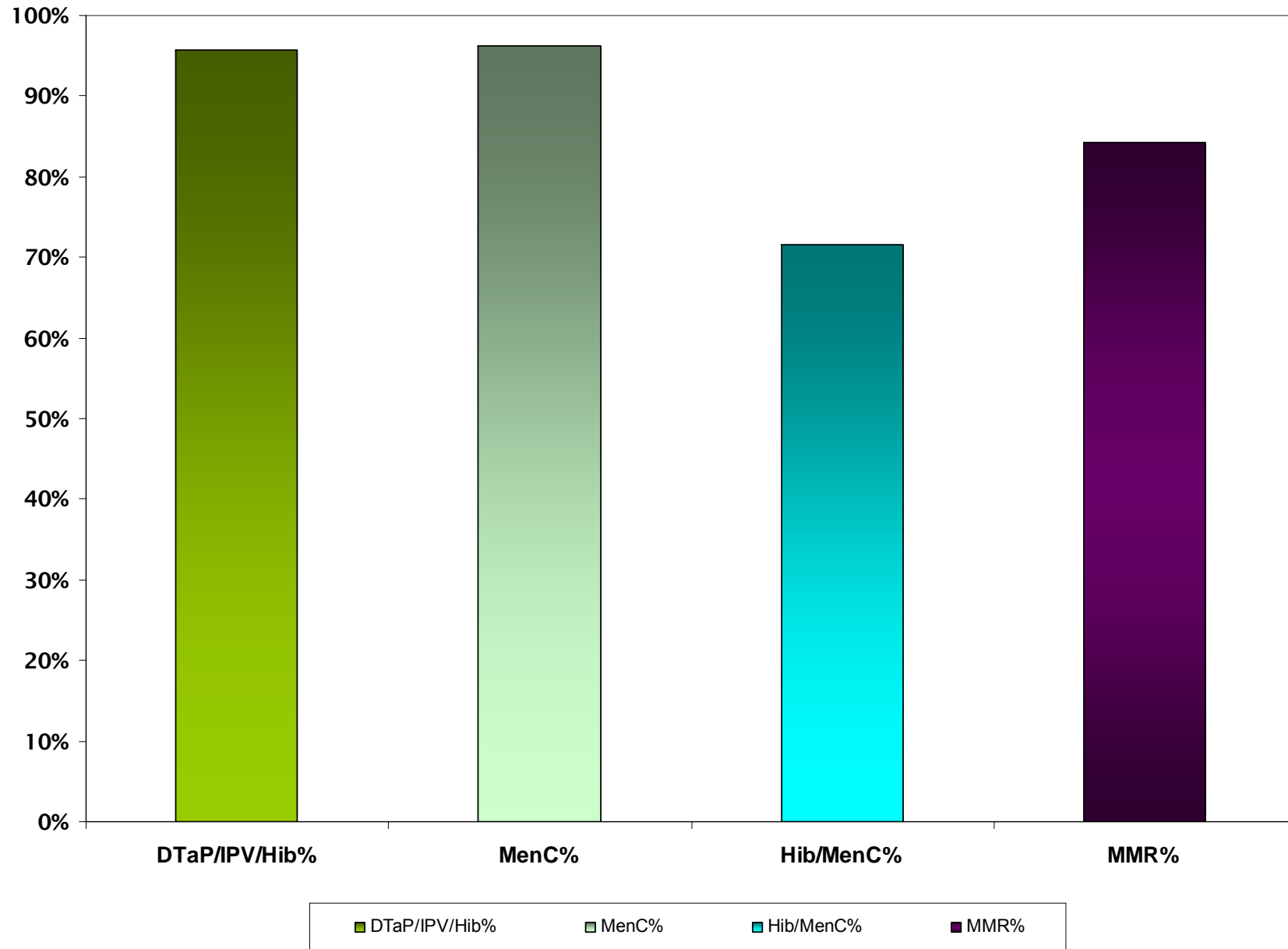
Lower than England rate of 5 per 1000 in all local authority levels.

Multi-agency action needed especially children's centres.

# Scarf chart for inequalities in infant mortality



Percentage of 2 year olds in Hertfordshire who completed their vaccinations (2007/2008)





West Hertfordshire Primary Care Trust and  
East and North Hertfordshire Primary Care Trust



# Healthy Weight

November 2008

Dr Hilary Angwin



West Hertfordshire Primary Care Trust and  
East and North Hertfordshire Primary Care Trust

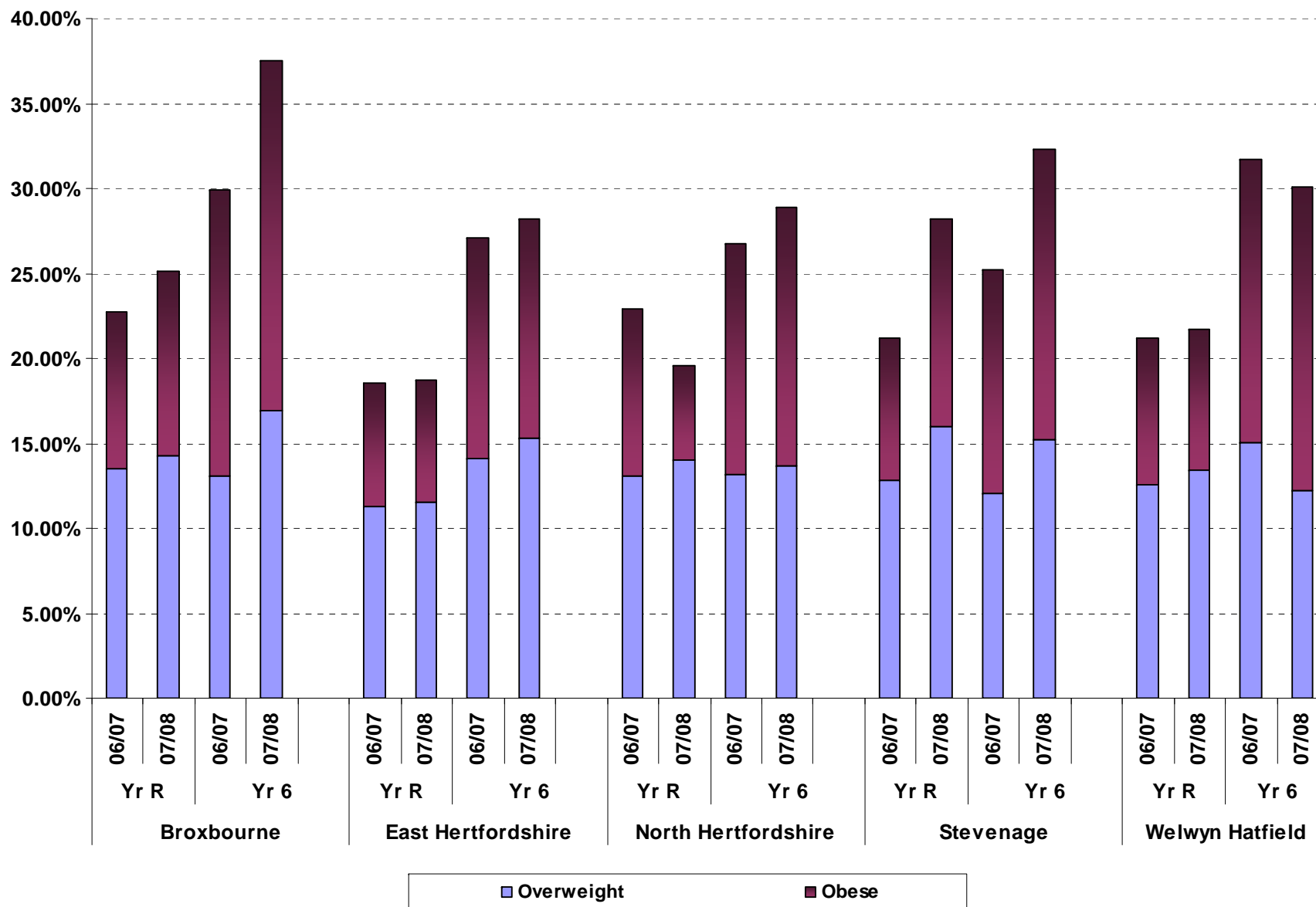


# National Child Measurement Programme

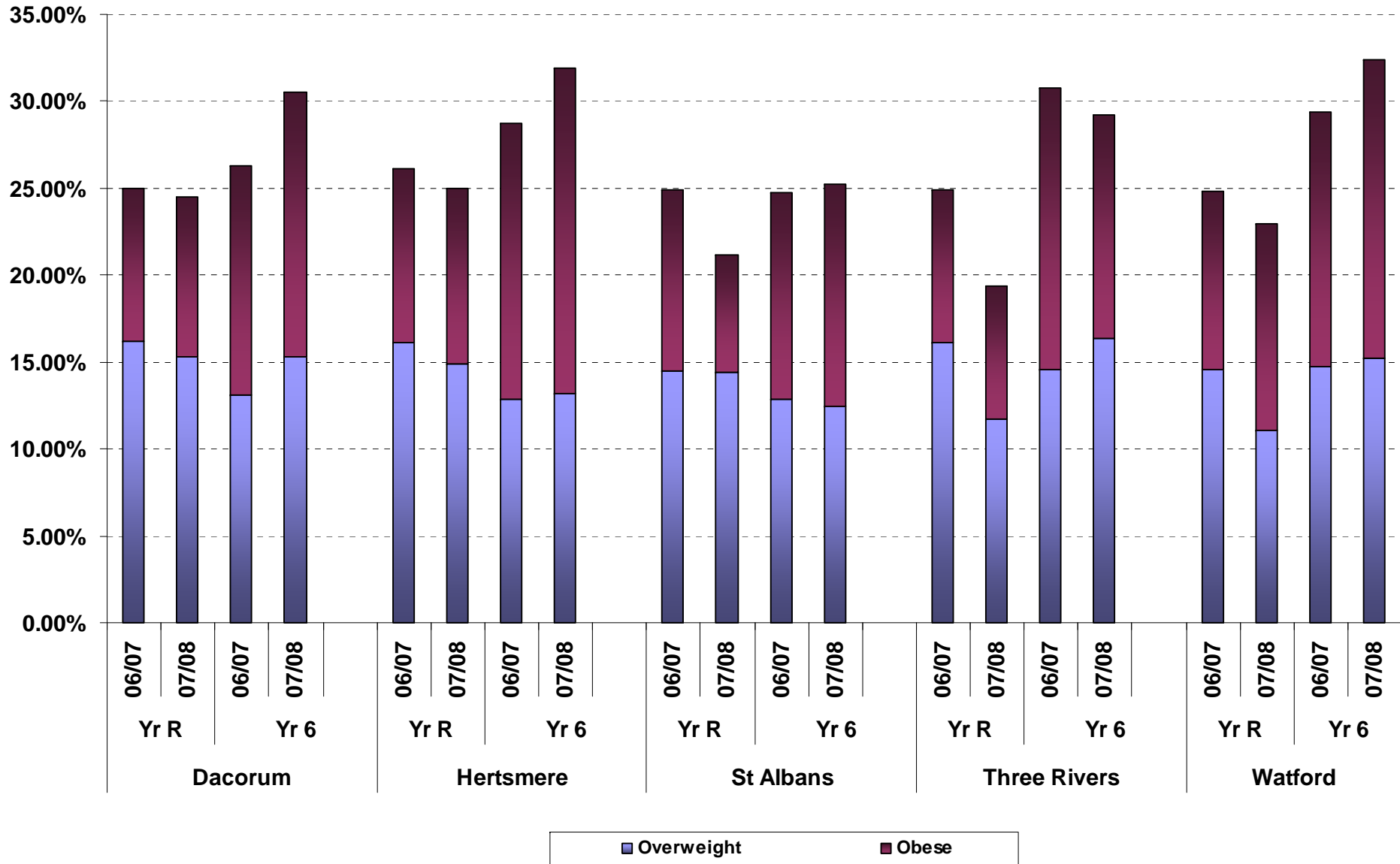
## Hertfordshire data :

	Reception		Year 6	
	<b>Overweight</b>	<b>Obese</b>	<b>Overweight</b>	<b>Obese</b>
2006/07	14.0%	9.2%	13.6%	14.2%
2007/08	13.7%	8.7%	14.5%	15.7%

**Overweight and Obesity in East & North Hertfordshire Local Authorities, National Child Measurement Programme 2006-7 and 2007-2008 Reception Class and Year 6**



**Overweight and Obesity in West Hertfordshire Local Authorities, National Child Measurement Programme  
2006-7 and 2007-2008 Reception Class and Year 6**





West Hertfordshire Primary Care Trust and  
East and North Hertfordshire Primary Care Trust



## 3 Key Issues for Further Discussion in the Workshop

- Childhood Obesity
- Mental Health
- Disability

