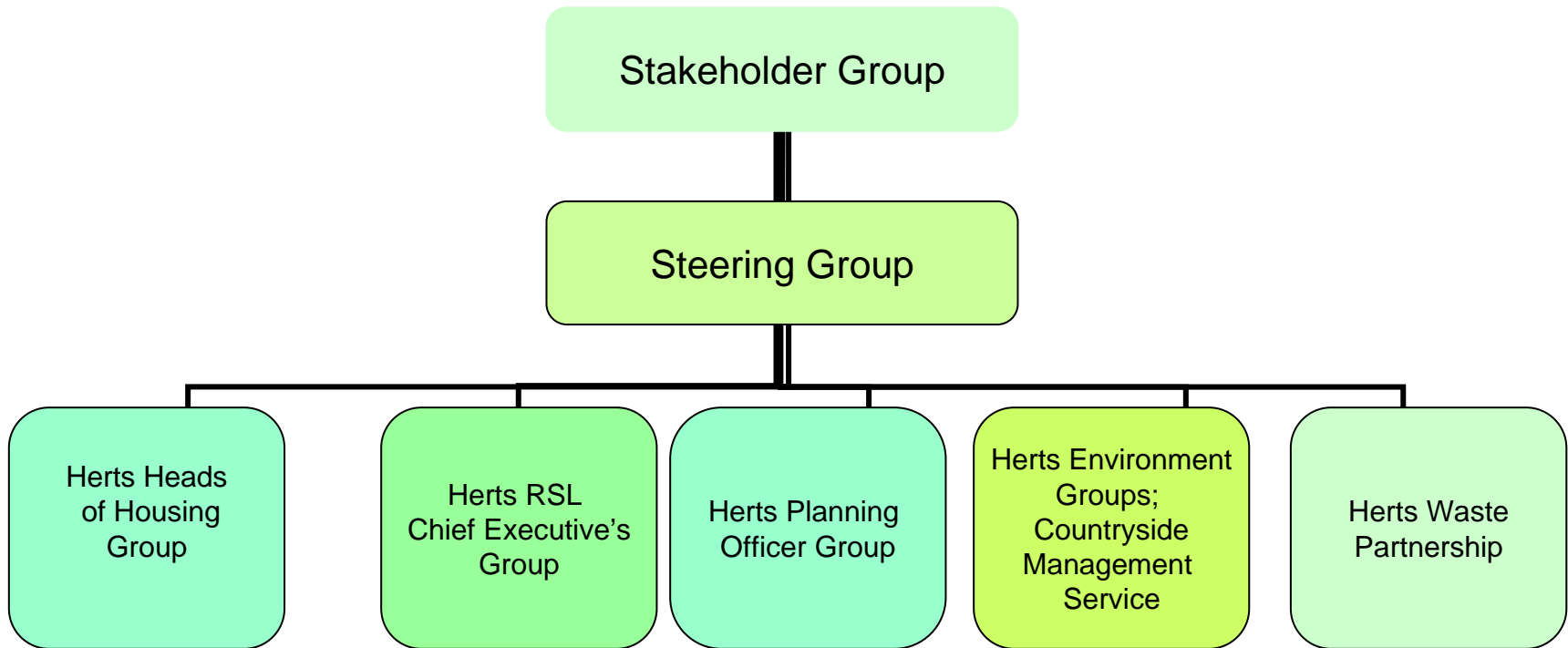


Better Places to Live



Partnerships Leads and Actions



Lead	Actions
Herts Heads of Housing Group	<ul style="list-style-type: none"> • Produce a joint strategic housing needs assessment for Hertfordshire • Ensure innovative approaches to mixed tenures and supporting the entry of new households into the housing market are pursued
Chief Executives of RSL Group	<ul style="list-style-type: none"> • Increase the number of affordable homes delivered
Herts Planning Officer Group	<ul style="list-style-type: none"> • Increase the number of net additional homes provided per year • Ensure the principles of maintaining the character and individuality of our communities and avoiding coalescence • Ensure that new neighbourhoods and town centres have a clear sense of place in which safe and sustainable lifestyles are 'designed in' and crime and anti-social behaviour is 'designed out'
Herts Environment Groups	<ul style="list-style-type: none"> • Develop a strategy for the future management of our countryside
Herts Waste Partnership	<ul style="list-style-type: none"> • Improve street and environmental cleanliness